

## Effects of ice stressors and pollutants on the Arctic marine cryosphere (EISPAC)

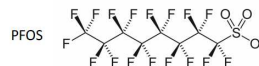
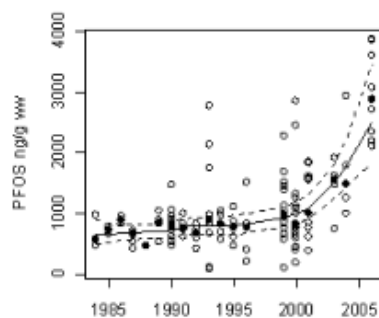
UK PI: Crispin Halsall

German PIs: Kristin Dähnke/Tina Sanders




### Aim of EISPAC


Evaluate whether ice-associated contaminants serve as stressors on ice habitat functioning in relation to cryosphere dynamics and in comparison to the behaviour of key nutrients.






Dietz et al. *ES&T*, 2008, 42: 2701-2707



**Helmholtz-Zentrum Geesthacht**  
Zentrum für Material- und Küstenforschung






---

**Work packages:**

- WP1 Contaminants in the Arctic: entry and fate in the sea ice system of the MIZ.
- WP2 Mechanistic fate and behaviour studies of contaminants in an experimental sea ice facility
- WP3 Nutrient input and biogeochemistry in the Arctic marine cryosphere
- WP4 Understanding the impact of multiple stressors and the repercussion for ecosystem services



**Helmholtz-Zentrum Geesthacht**  
Zentrum für Material- und Küstenforschung



---

**Field work – contaminant entry & fate**




**Laboratory – ice mechanisms & fate**




**Modelling - Food web functioning & impact**





Mar #1827 v5.000 v0.0/Jan17



