



Preparing for the reality of a rapidly changing Arctic

WWF Arctic Programme

Rod Downie, Chief Polar Advisor

© naturepl.com / Sue Flood / WWF



Human-driven climate change is warming the Arctic more than twice as fast as the global average.

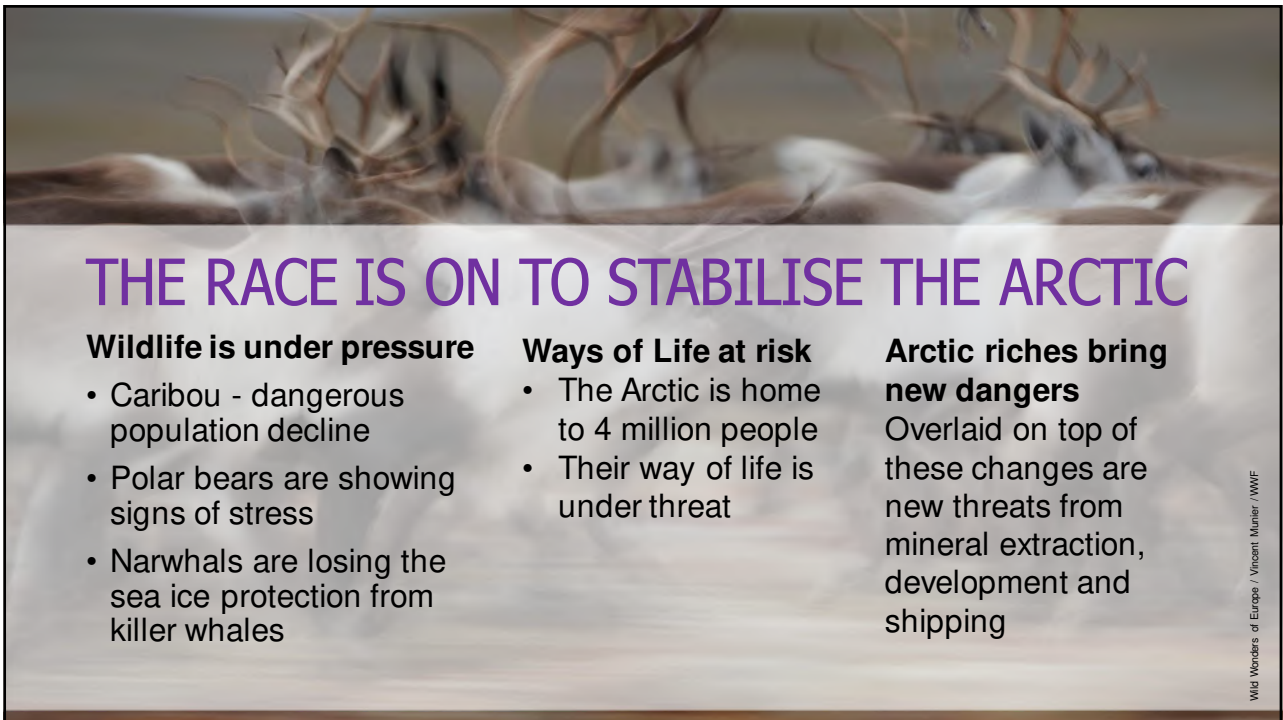
The Arctic is changing –
fast

Photo: Ewins / WWF-Canada



WHAT HAPPENS IN THE ARCTIC DOESN'T STAY IN THE ARCTIC

Global Warming Images / WWF



THE RACE IS ON TO STABILISE THE ARCTIC

Wildlife is under pressure

- Caribou - dangerous population decline
- Polar bears are showing signs of stress
- Narwhals are losing the sea ice protection from killer whales

Ways of Life at risk

- The Arctic is home to 4 million people
- Their way of life is under threat

Arctic riches bring new dangers

Overlaid on top of these changes are new threats from mineral extraction, development and shipping

Wild Wonders of Europe / Vincent Munier / WWF

By prioritizing sustainable development over exploitation, combined with science-based co-management, the Arctic continues to support and benefit life in the region and beyond.



Paul Ninken / National Geographic / WWF

THE POWER OF A PAN-ARCTIC APPROACH



9 offices combine expertise:

- Species & Biodiversity
- Marine Spatial Planning
- Climate Change
- Industry & Development
- Policy & Advocacy



CHANGE IS HERE

Here's how we're shaping it:



Bold global action on climate change



Sustainable development

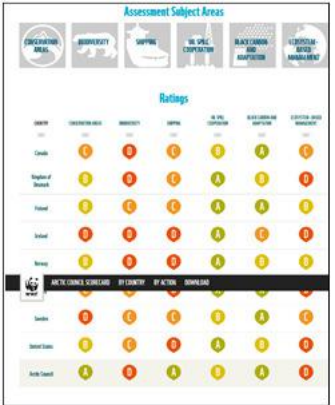


Better governance



Protecting biodiversity





WWF Arctic Council Scorecard



WWF Polar Bear CAP Scorecard



WORKING WITH COMMUNITIES

With change comes opportunity for the people and communities living in the Arctic.

That change also brings challenges and threats for all life who call the Arctic home.



Stellan Wehmann / WWF

